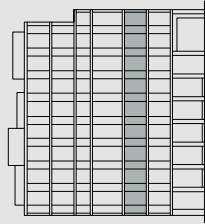


L2



Cremorne House

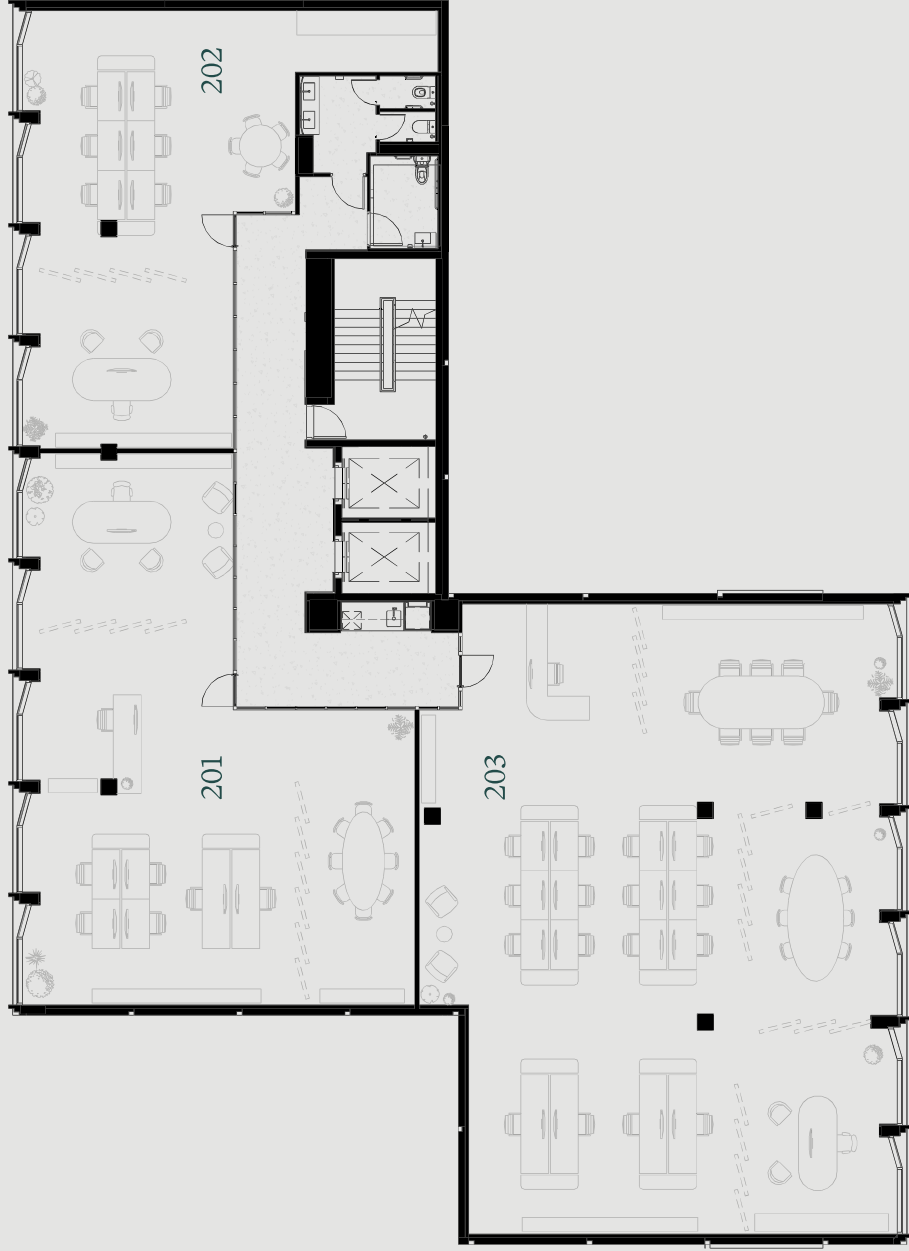
201 – 142sqm

202 – 95sqm

203 – 231sqm



Adolph Street



Pearson Street

6 Adolph Street, Cremorne

Disclaimer: Please note that this floor plan is a guide only and was prepared prior to completion of the construction and is not intended to be used as a basis for any guarantee. Changes may be made during development and the floor plan is subject to changes without notice in accordance with the provisions of the contract of sale. This floor plan is for illustrative purposes only. People should rely on their own enquiries. G.A. quoted areas are based on Property Council of Australia Method of Measurement 1997.

WILMAC™